

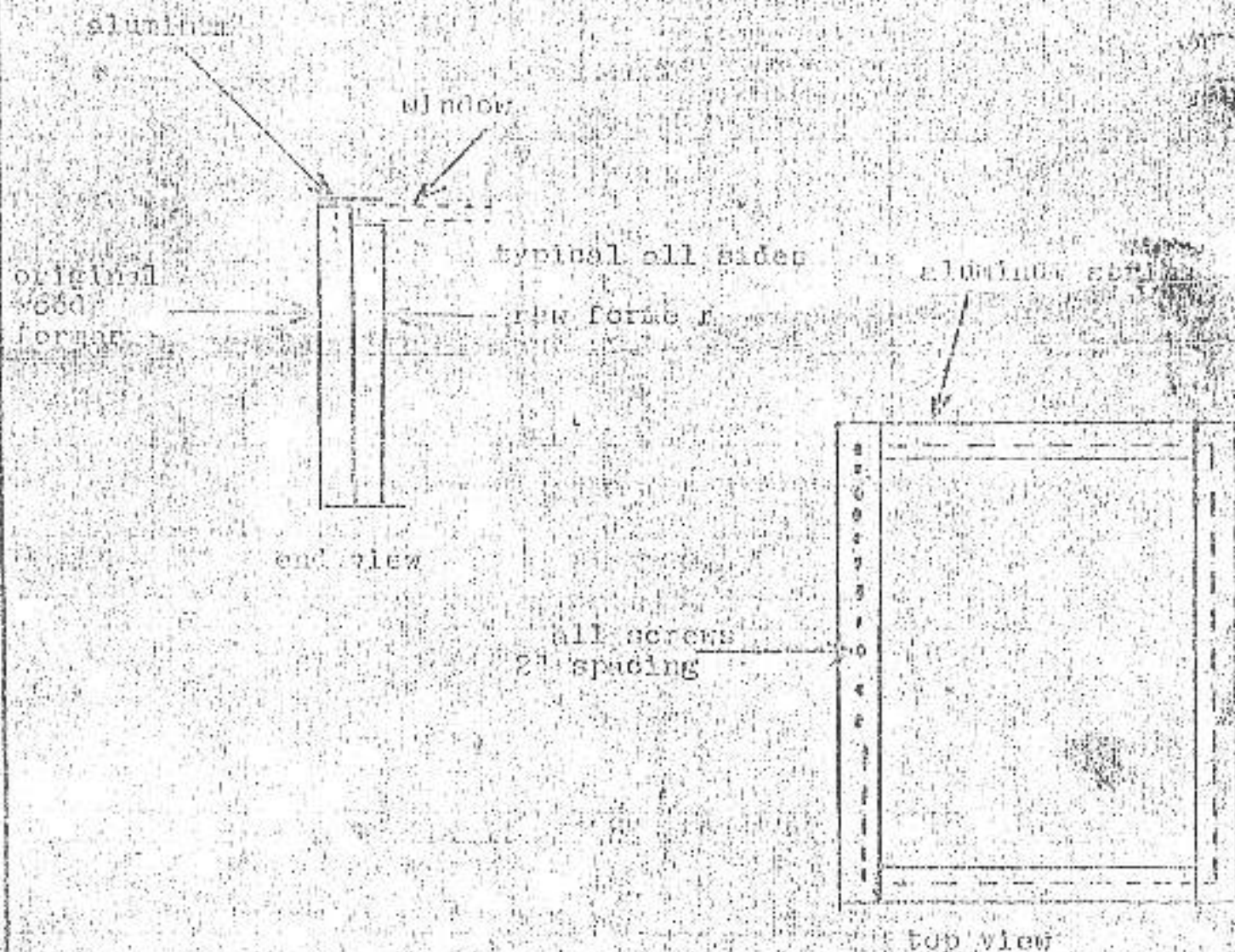
NOTICE

Weight and balance or operating limitation changes shall be entered in the appropriate aircraft record. An alteration must be compatible with all previous alterations to assure continued conformity with the applicable airworthiness requirements.

3. DESCRIPTION OF WORK ACCOMPLISHED (If more space is required, attach additional sheets. Identify with aircraft nationality and registration mark and date work completed.)

Removed fabric from top of cabin and installed a 16 by 30 by 3/16 tinted plexiglass skylight.

Using aviation formers I installed a 3/4" plywood channel edge for the window to rest on and secured it with 2" aluminum strips around the entire window perimeter.



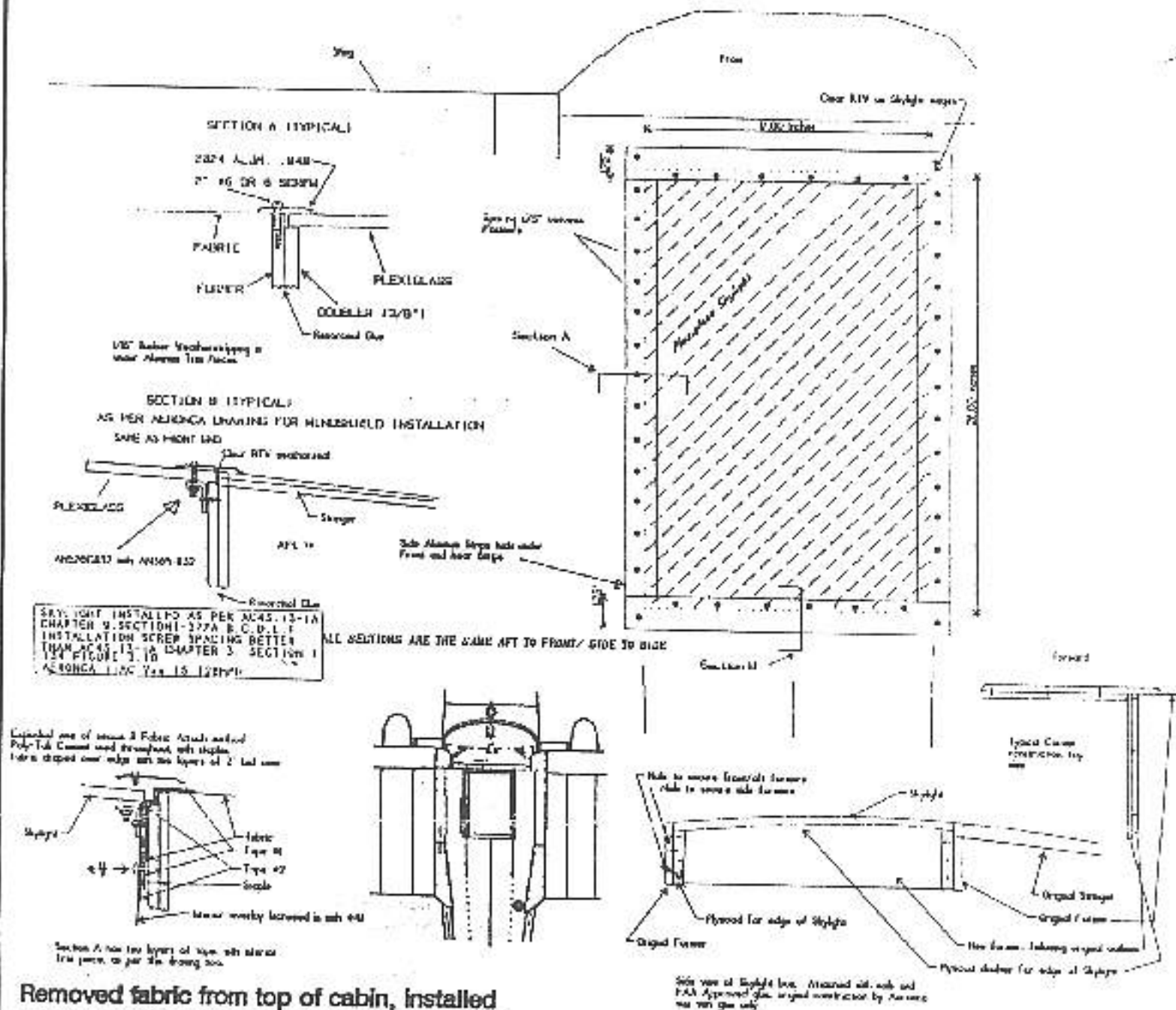
ADDITIONAL SHEETS ARE ATTACHED

NOTICE

Weight and balance or operating limitation changes shall be entered in the appropriate aircraft record. An alteration must be compatible with all previous alterations to assure continued conformity with the applicable airworthiness requirements.

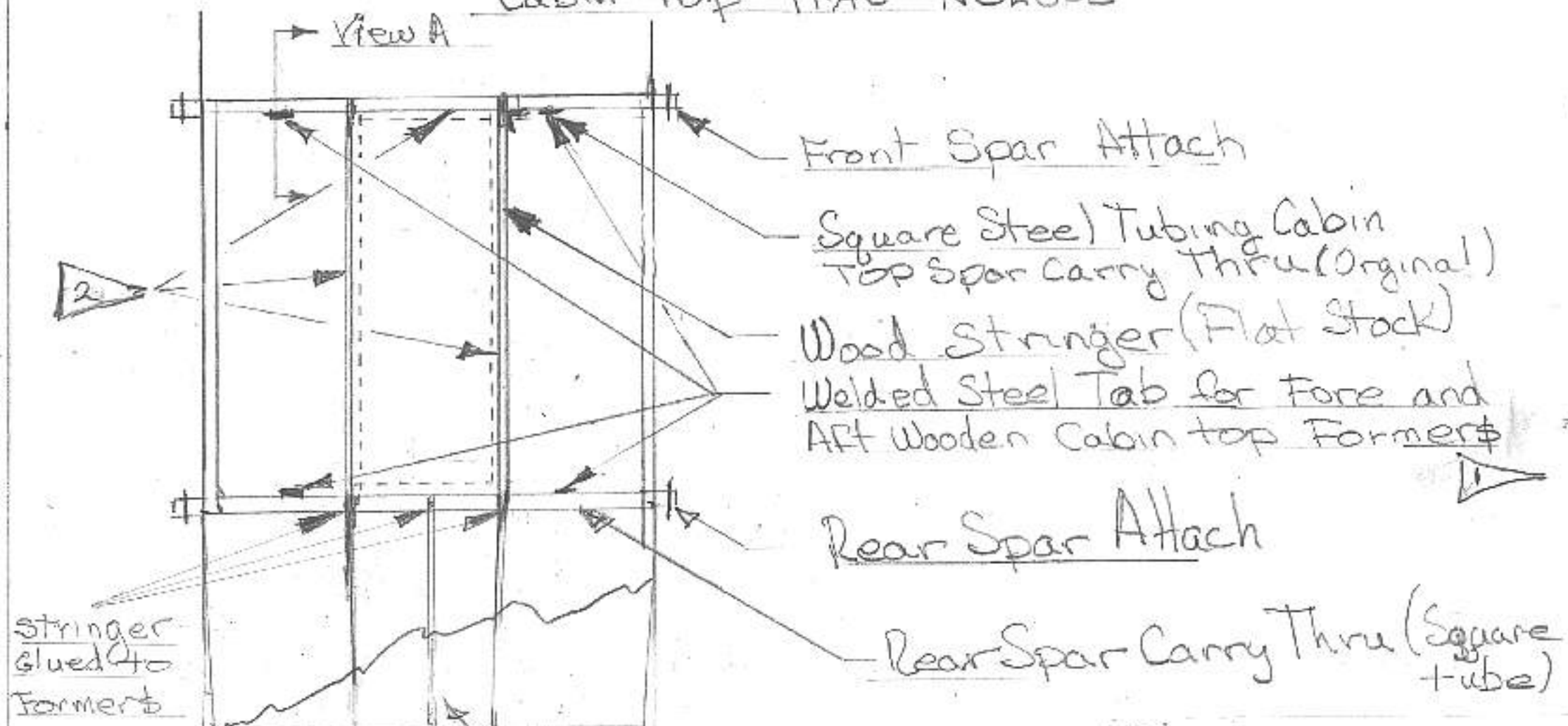
B. Description of Work Accomplished

(If more space is required, attach additional sheets. Identify with aircraft nationality and registration mark and date work completed.)

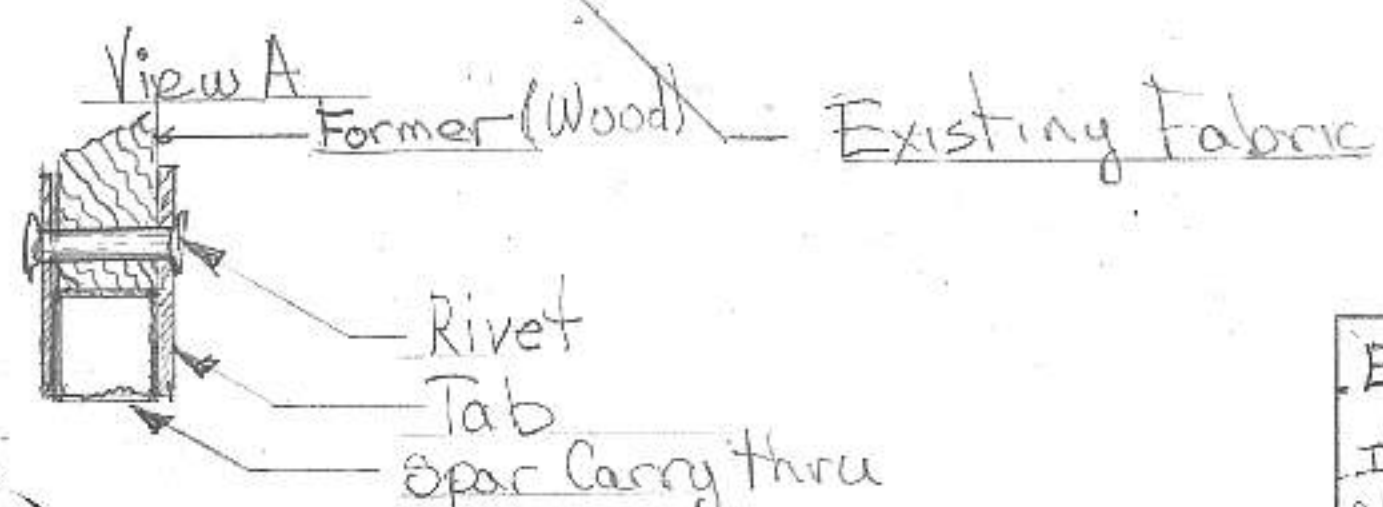


Additional Sheets Are Attached

Cabin Top IIAC N3286E



stringer glued to formers



Note	
1	Formers Attached to Structure via special Rivet thru Wood.
2	Sky light frame Glued to Exist Wood

Existing Structure Model: IIAC
 In Relation to In: N3286E
 E
 F